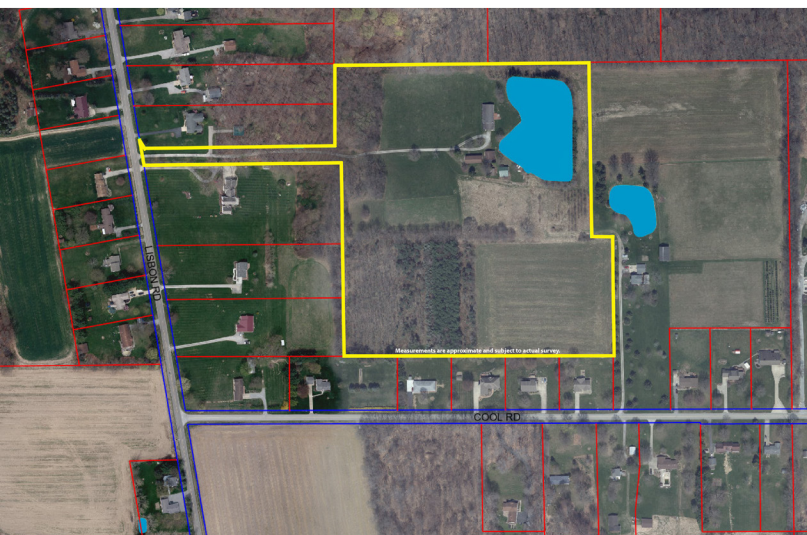


# ABSOLUTE AUCTION

SATURDAY, JANUARY 10, 2026, 10:30 AM  
Live Auction With Online Bidding On Real Estate



REAL ESTATE



Features a hideaway 25-acre mini farm. Long driveway to ranch home overlooking nice pond. Home has large applianced kitchen with updated island, dining room, living room, family room with fireplace, 3 bedrooms and 2 full baths. Manufactured home built in 2000 on foundation with crawl space, plus 2-car garage and long covered front porch. LP gas heat, central A/C. Also 24'x60' shop building w/ 12' overhead door, 2-car insulated garage and 2 older sheds that need work. All mineral rights owned by seller to transfer. Terrific setting! Room for fields or pastures, plus old windmill on property. Don't miss this one!

**25-ACRE MINI FARM,  
HIDEAWAY SETTING**  
Ranch Home, Outbuildings,  
Pond, Free Gas  
Green Twp., Mahoning County,  
South Range LSD

10473 LISBON RD.,  
CANFIELD, OH 44406

**Terms On Real Estate:** 10% down auction day, balance due at closing. A 10% buyer's premium will be added to the highest bid to establish the purchase price. Any desired inspections must be made prior to bidding. All information contained herein was derived from sources believed to be correct. Information is believed to be accurate but not guaranteed.



**MATTHEW P. KIKO**  
**AUCTIONEER/REALTOR®**  
330.327.9617  
mattkiko@kikocompany.com

[www.kikoauctions.com](http://www.kikoauctions.com) | 800.533.5456

Information is believed to be  
accurate but not guaranteed.  
KIKO Auctioneers



Scan for auction  
details, including  
directions.

*Absolute Auction.  
All sells to the  
highest bidders  
on location.*